

# Sinfonia Concertante K364

Double Bass

Mozart

Allegro maestoso

8

14

23

29

32

37

46

52

57

64

*sf* *sf* *f*

*p*

4 5 6 7 2 3 4

5 6 7

*f*

*pizz.*

*p* *f* *p* *f*

*arco*

*p*

*cresc.*

*f*

*ff* *p*

*n* (*v*)

*tr* *tr*

# Double Bass

2  
71

7  $\text{acc}$   $\text{acc}$   $\text{acc}$  2  $\text{acc}$   $\text{acc}$   $\text{acc}$  7

*f*

91

*f* *p*

99

*fp* *f*

106

*p* *f* *p*

116

124

3

133

3

142

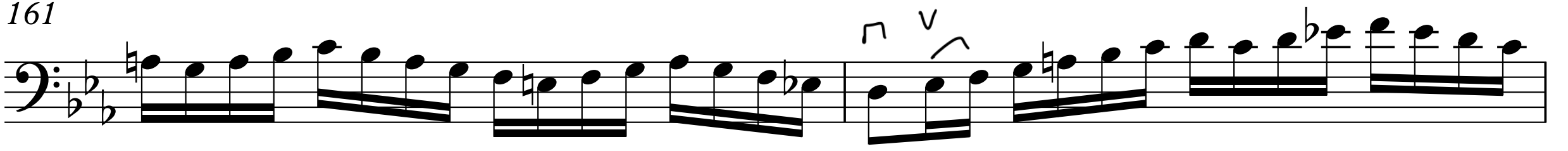
*sfp* 8

156

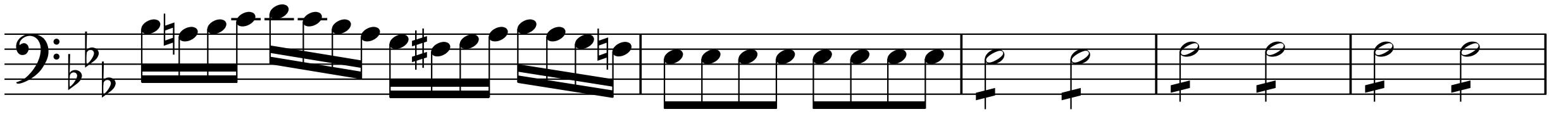
*cresc.* *f*

159

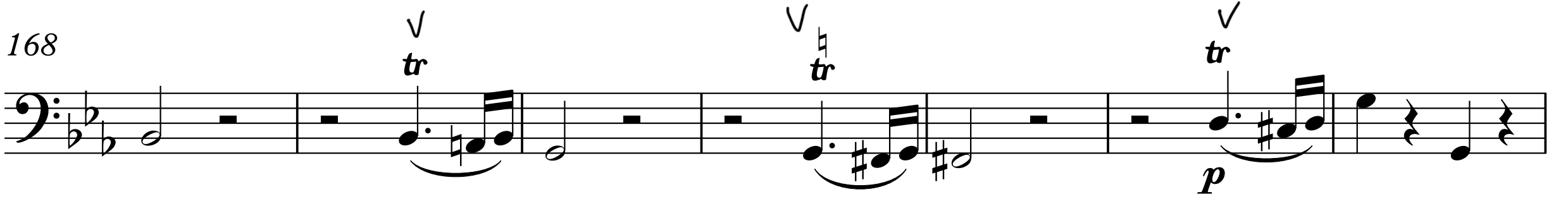
161



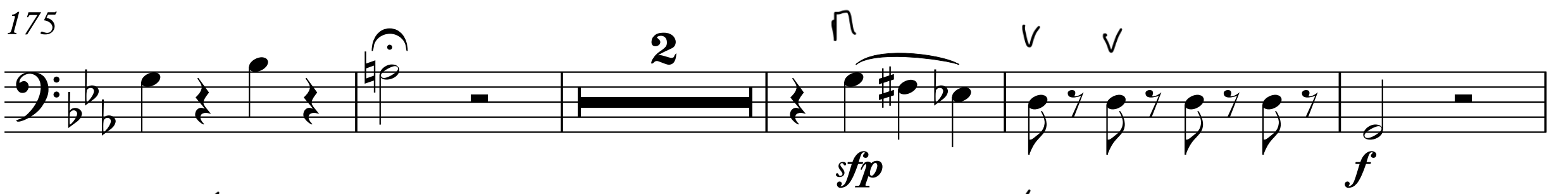
163



168



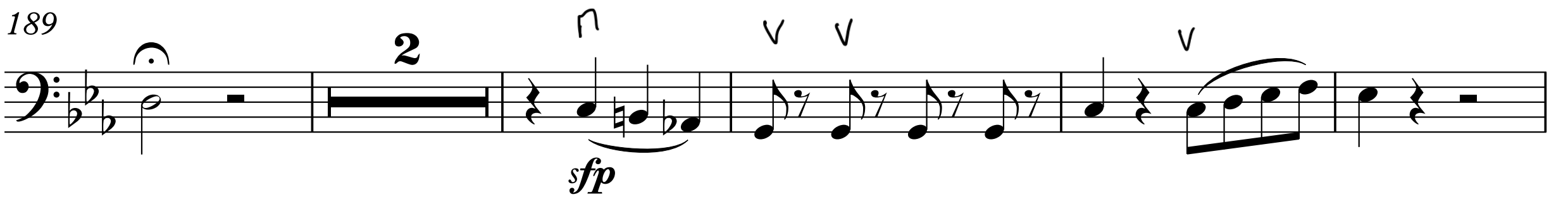
175



182



189



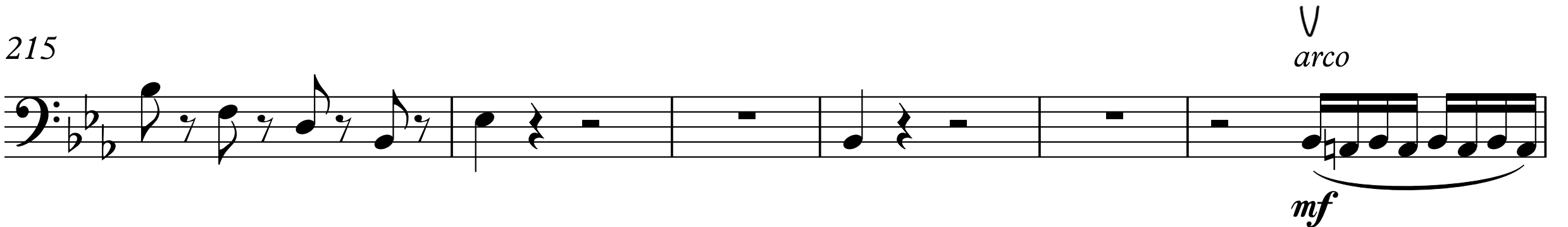
196



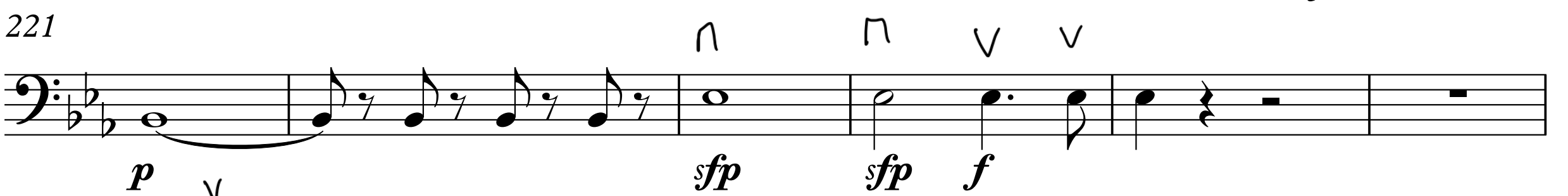
210



215



221



227



## 4

2

۲

v

V

□

v

v

7

$$f$$

✓

$$f$$

$p$

✓

 $f$ 

7

n

$$f$$

*p*

ח

 $f$ 

*p*



4

*pizz.*

$$f$$

$p$

 $\mathcal{J}$ 

*arco*

*p*

✓

7

ח

✓

308

308

315

315

4

4

324

324

*cresc.*

328

328 *f* *v*

The musical score for measures 328-333 is written in bass clef with a key signature of two flats (B-flat and E-flat). Measure 328 begins with a forte (*f*) dynamic and a breath mark (*v*). The melody is composed of eighth and sixteenth notes, with some measures featuring triplets. The score concludes with a double bar line at the end of measure 333.

330

330

330

333

The bass line of 'The Rose Tree' is written on a single staff with a bass clef and a key signature of two flats (B-flat and E-flat). The melody begins with a series of eighth and sixteenth notes, featuring some beamed sixteenth notes. It concludes with a final note followed by a double bar line and a repeat sign.

337

337

337

*f*

*p*

345

345      п      (v)      п      v

345      п      (v)      п      v

352

[illegible]

## II - Andante

6

*p*

6

*sf*

16

*sf*

25

*sf*

32

*sf*

39

*sf*

53

*sf*

58

*sf*

63

*sf*

69

*v v* *n*

76

*v* *n* *f p* *n* *v n*

83

*v* *n*

91

*v n* *n v* *v n* *v* *v* *2*

99

*n* *f 3* *v* *p*

102

*8* *v* *cresc.*

116

*n n* *f* *v* *n v* *v* *n* *p* *v V* *f*

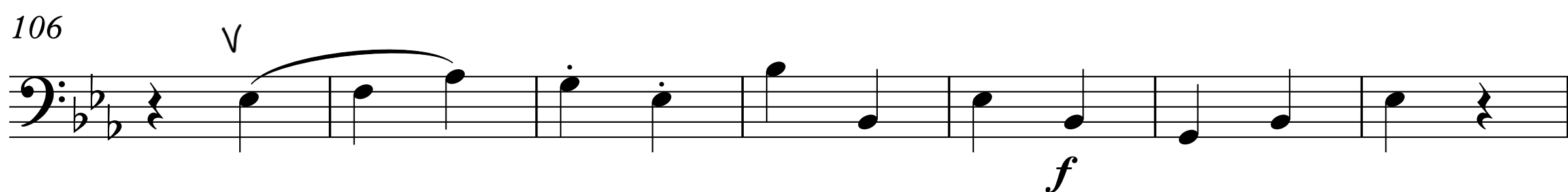
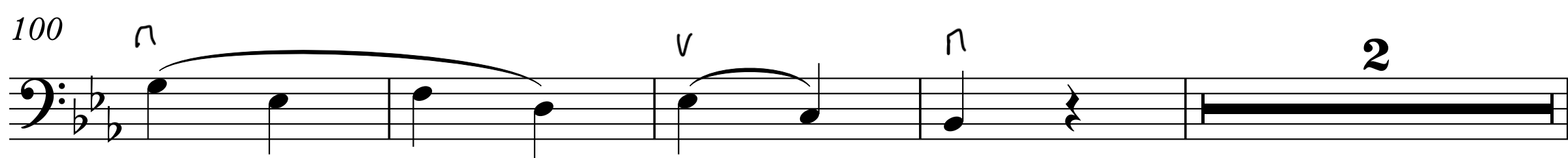
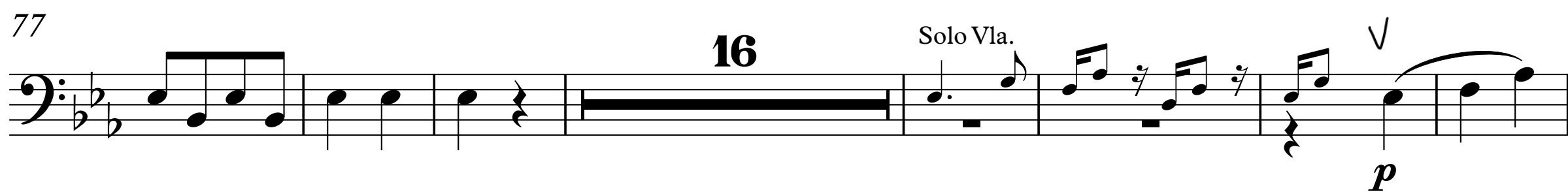
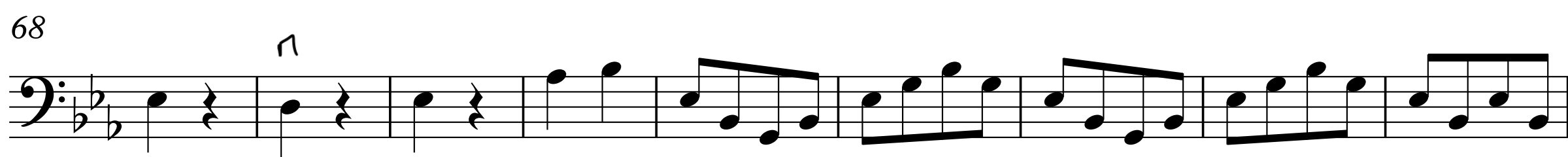
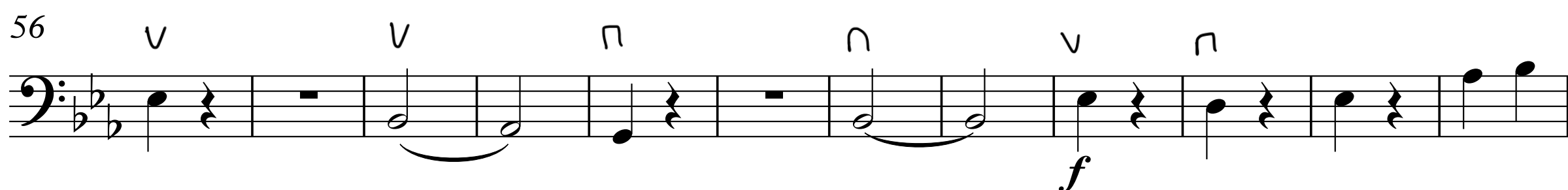
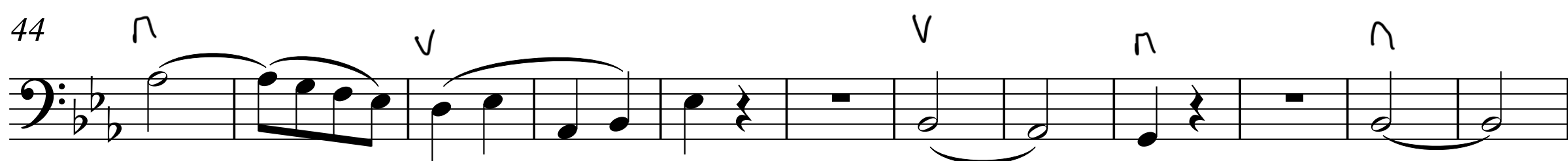
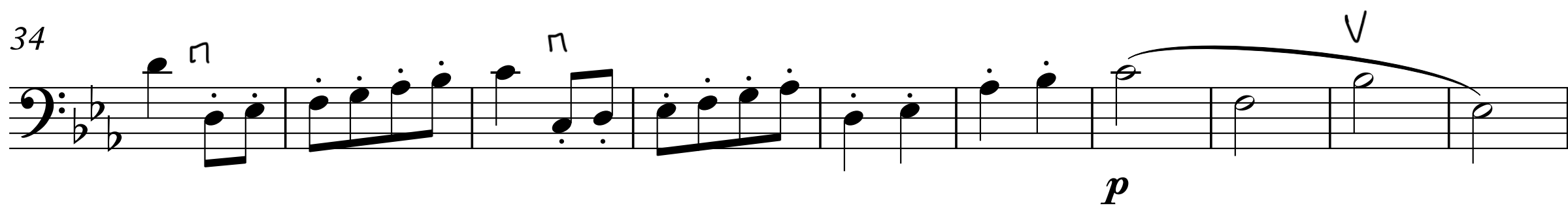
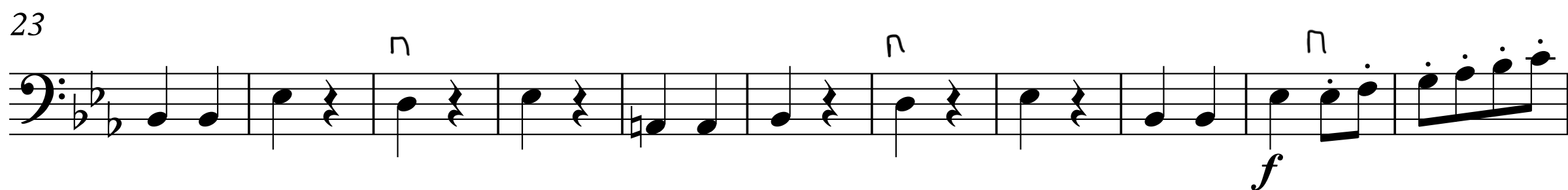
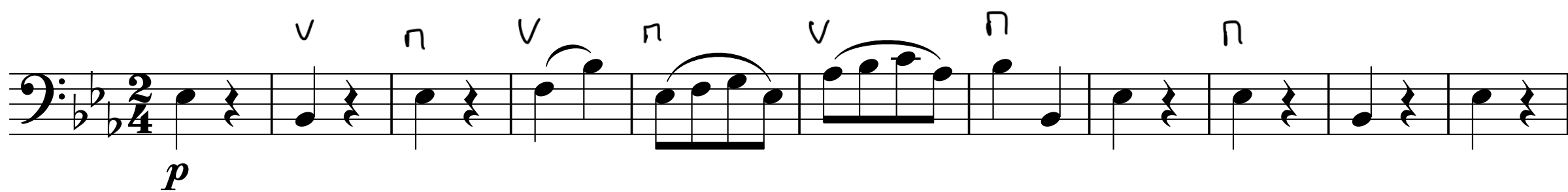
122

*p*

126

*sf* *p* *sf* *p*

## III - Presto





113

*p*

122

*v* *acc* *v*

133

**3**

146

**15** Vln. 1

169

**3** *v* *v* **3** *v* *v*

184

*v* *acc* *v* *f*

196

*mf* *v* *v* *p* **17**

220

*p* *acc* **7**

235

*f* *p*

245

*p*

257

*f* *p*

280

*p*

290

*p*

301

*p*

315

*p*

331

*f* *mf* *p*

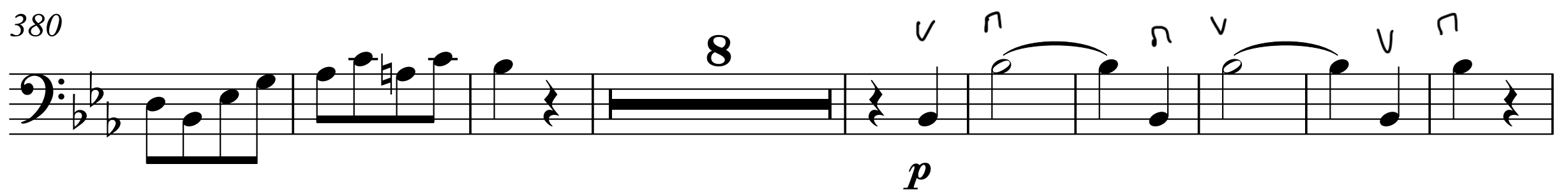
342

*p*

367

*f*

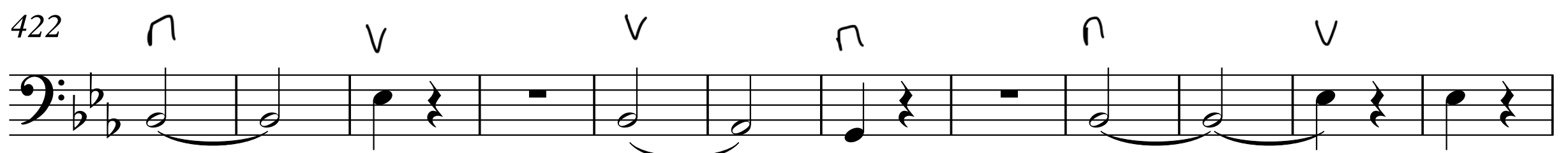
380



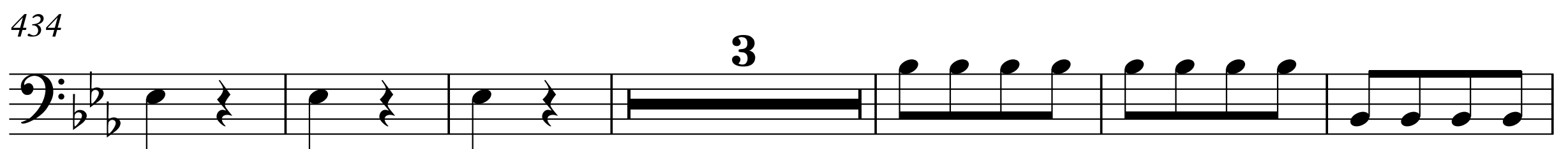
397



422



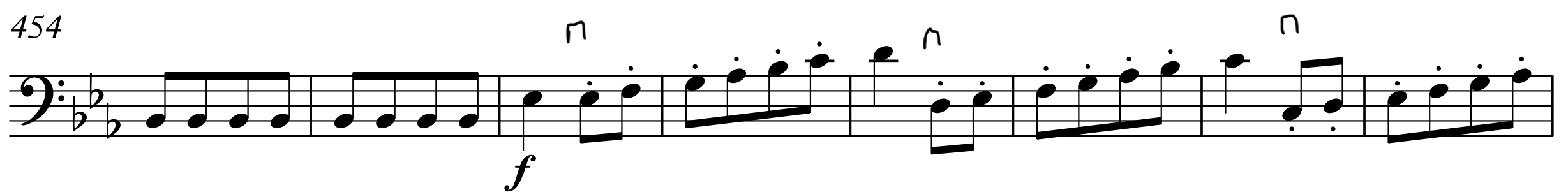
434



443



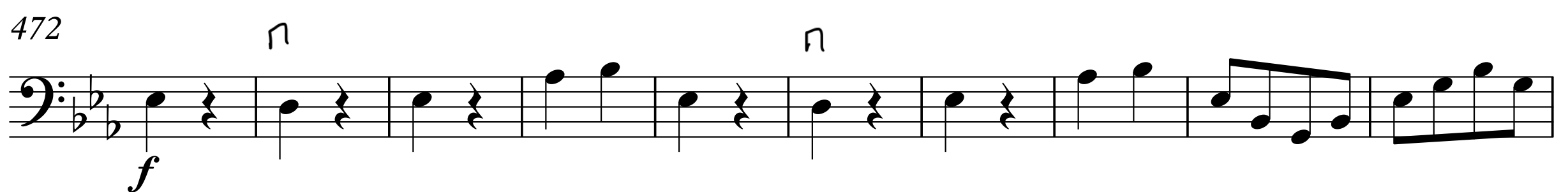
454



462



472



482

