

Sinfonia Concertante K364

Cello

Mozart

Allegro maestoso

8

15

22

28

32

36

45

52

58

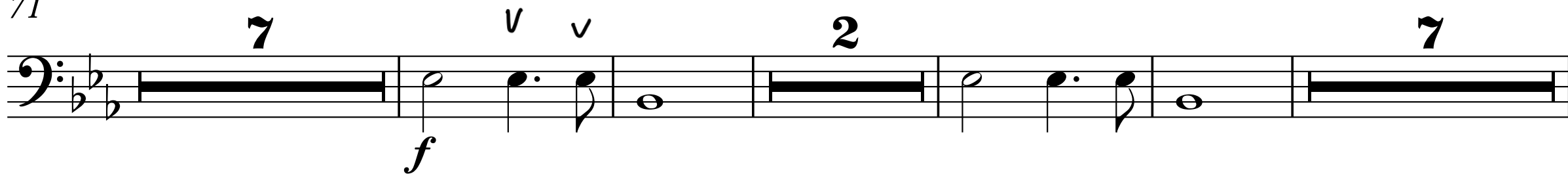
64

sfz *sfz* *f* *p* *f* *pizz.* *p* *f* *p* *arco* *f* *p* *cresc.* *f* *ff* *p* *(v)*

2

Cello

71



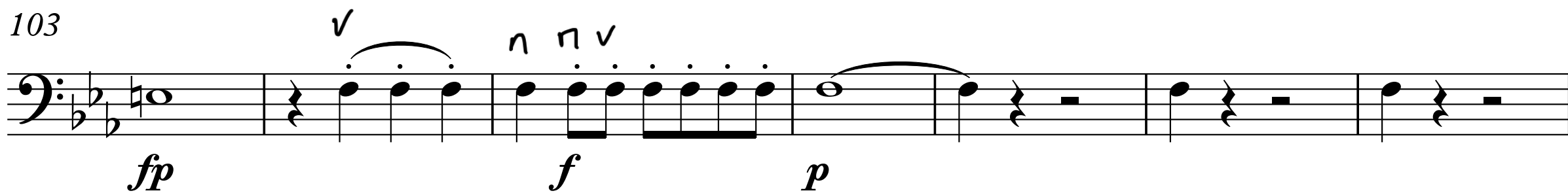
91



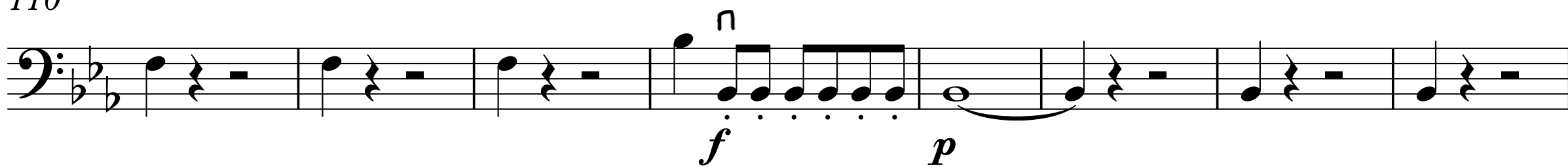
97



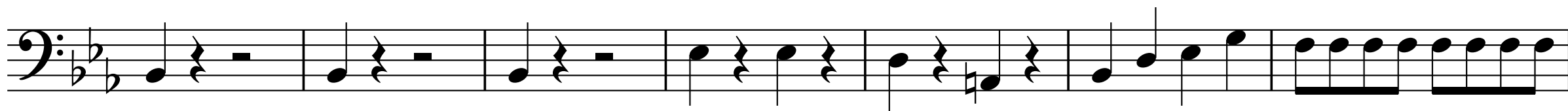
103



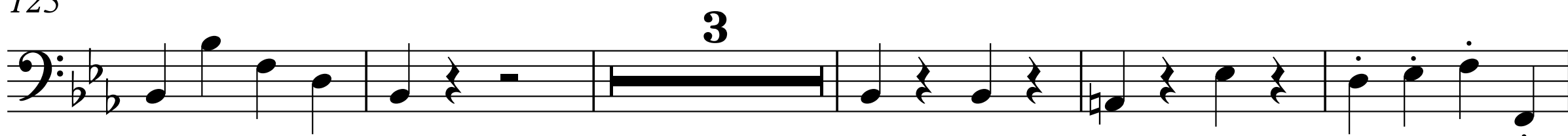
110



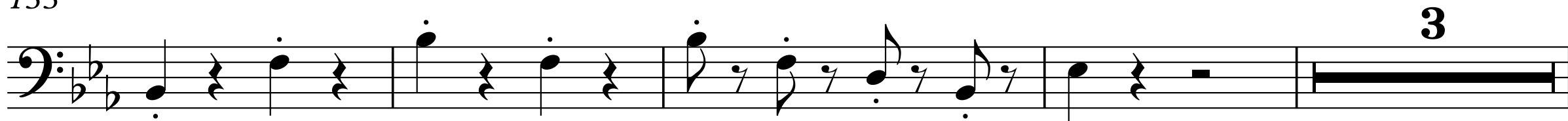
118



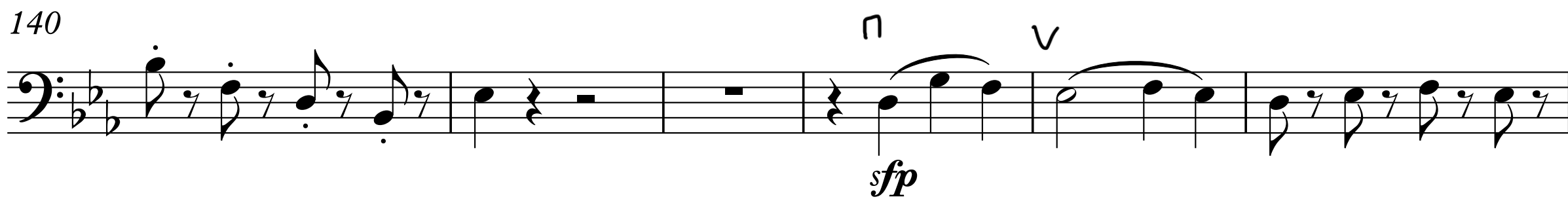
125



133



140



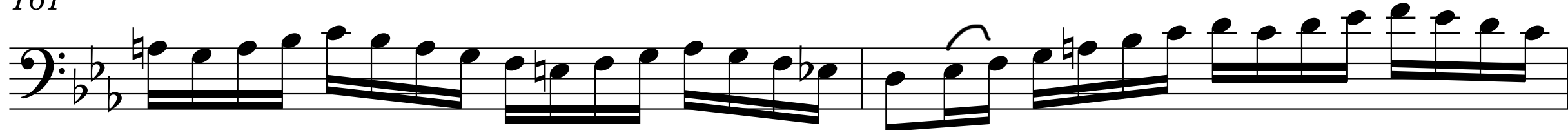
146



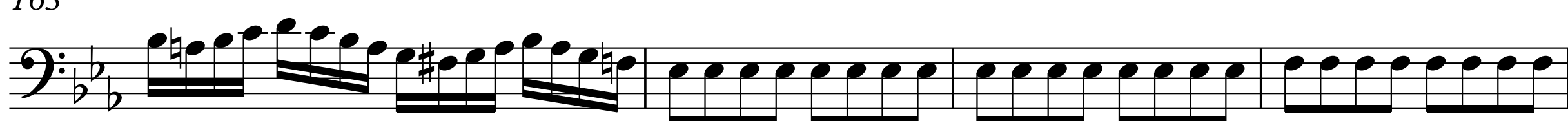
158



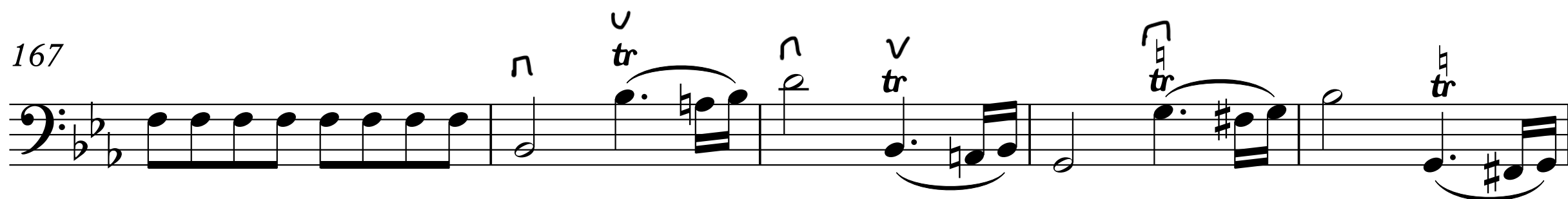
161



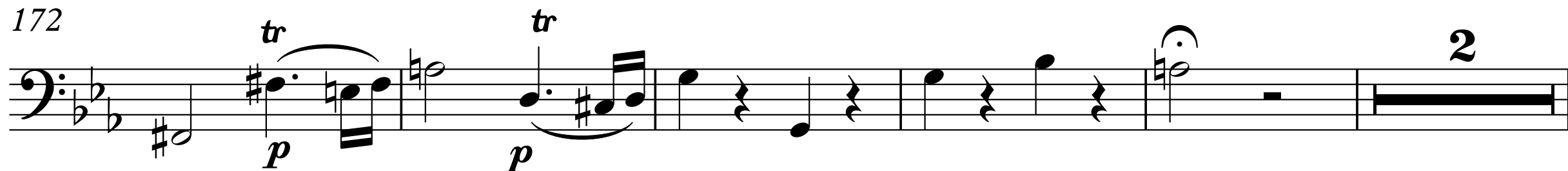
163



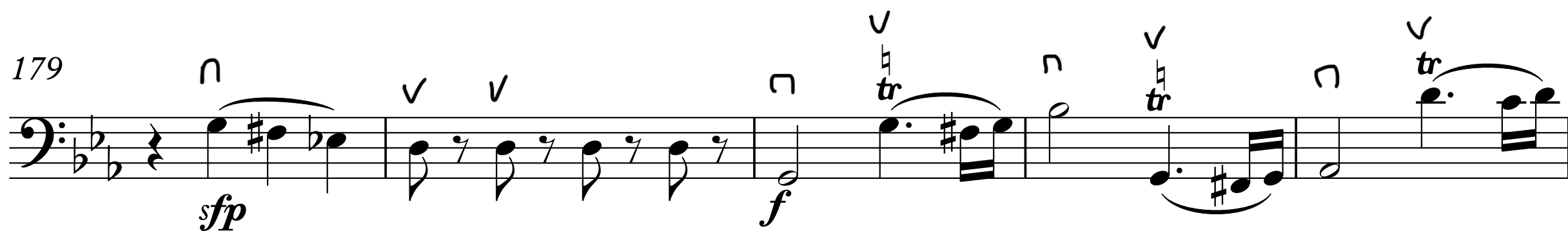
167



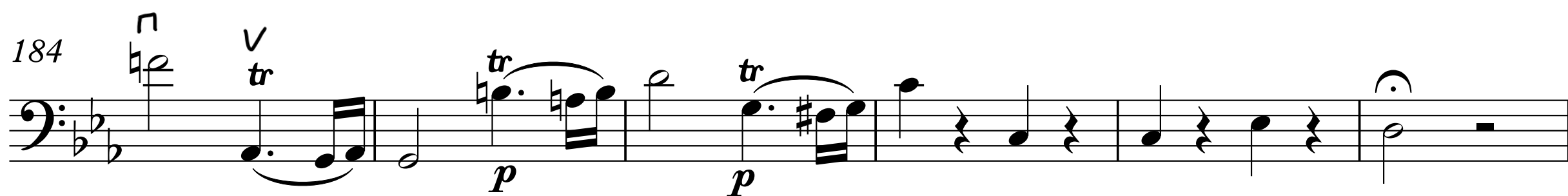
172



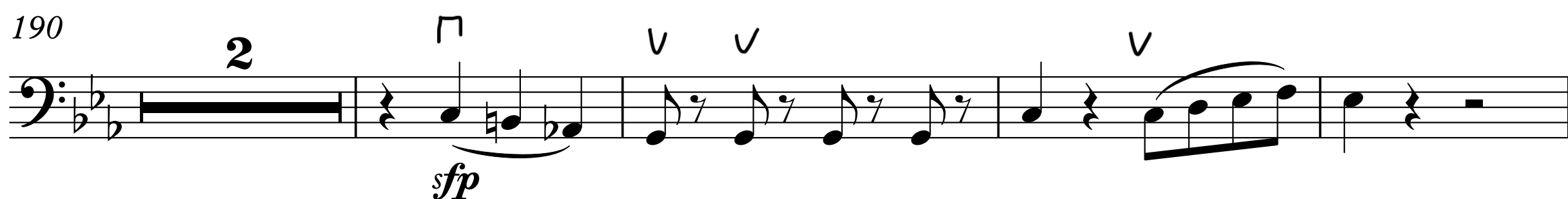
179



184



190



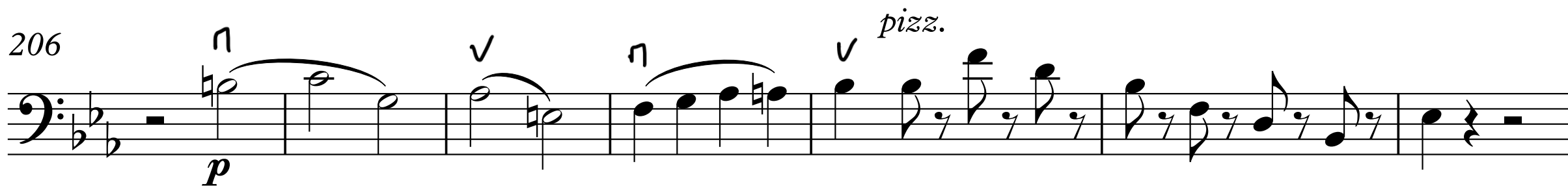
196



4

Cello

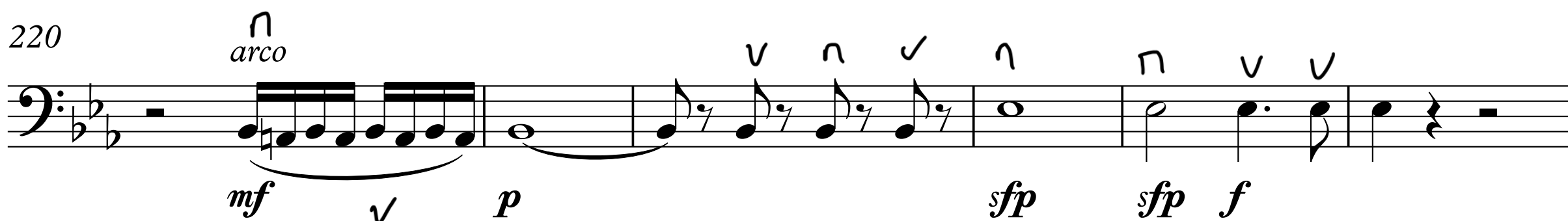
206



213



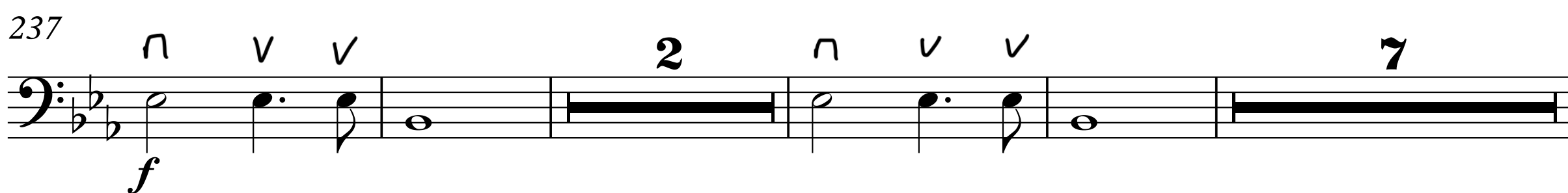
220



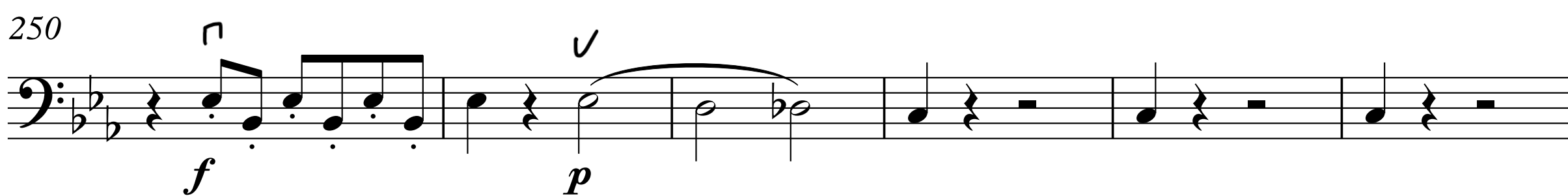
226



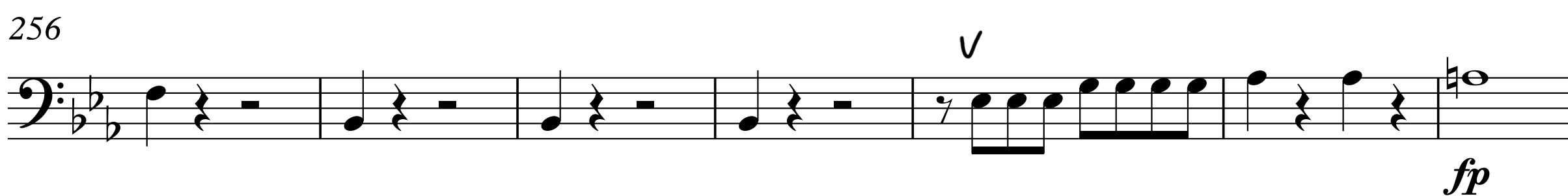
237



250



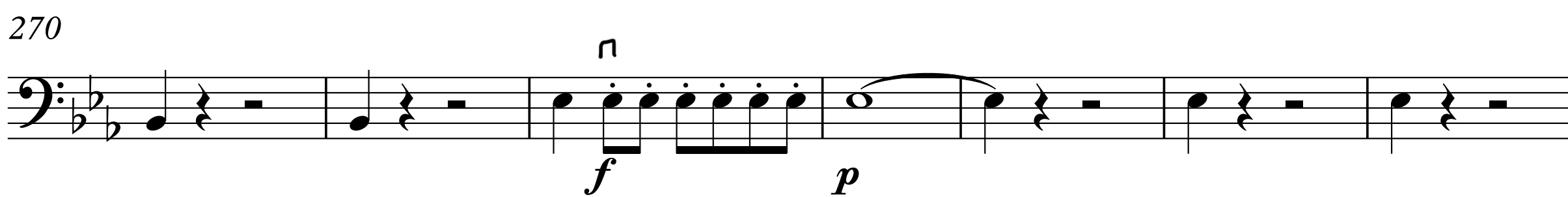
256



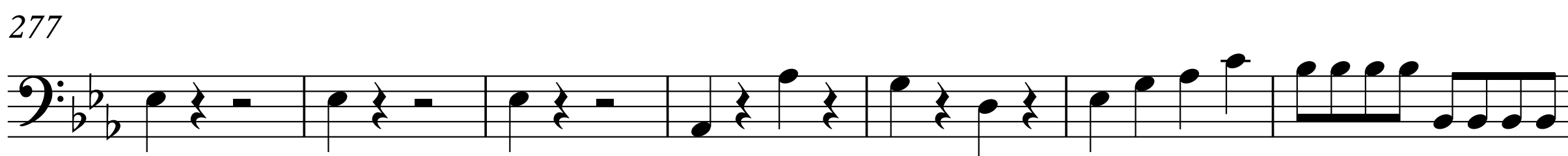
263



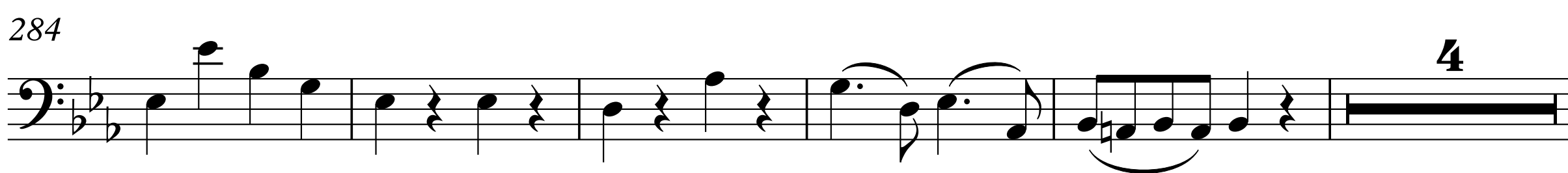
270



277



284



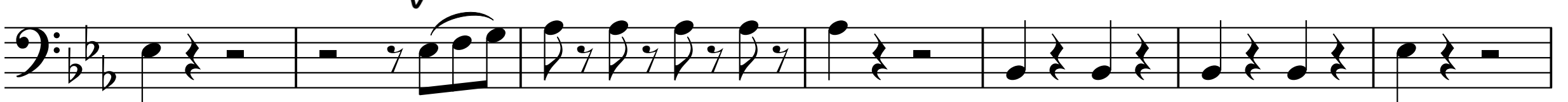
293

pizz.*f**p**f*

301

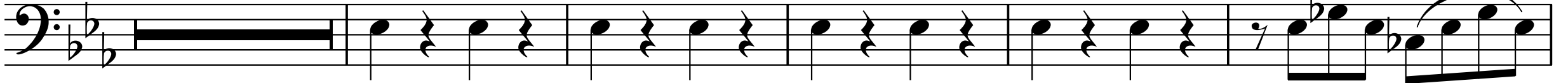
arco*p*

308

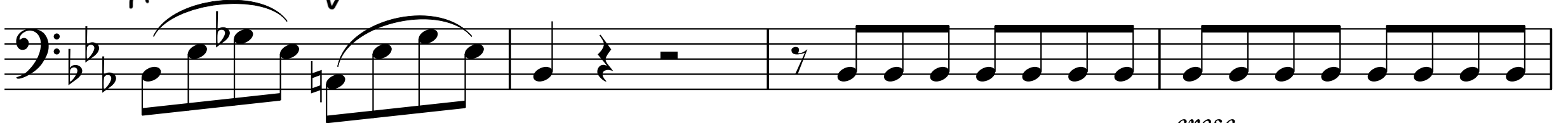


315

4



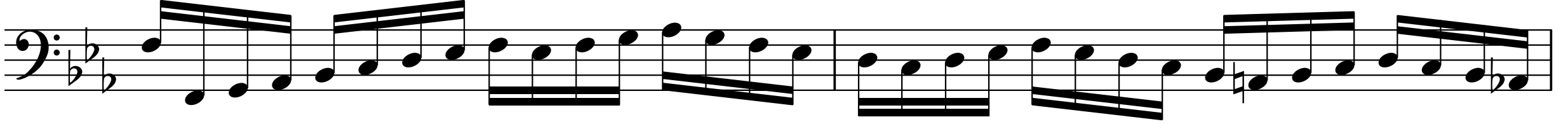
324

*cresc.*

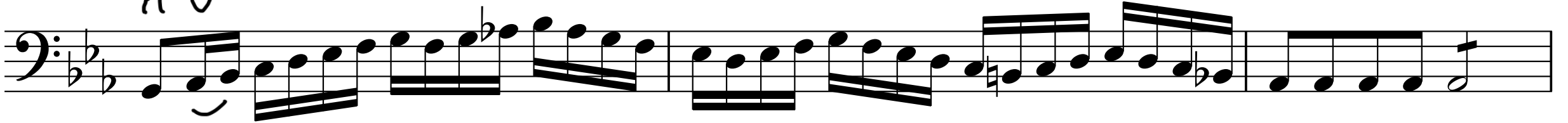
328

*f*

330



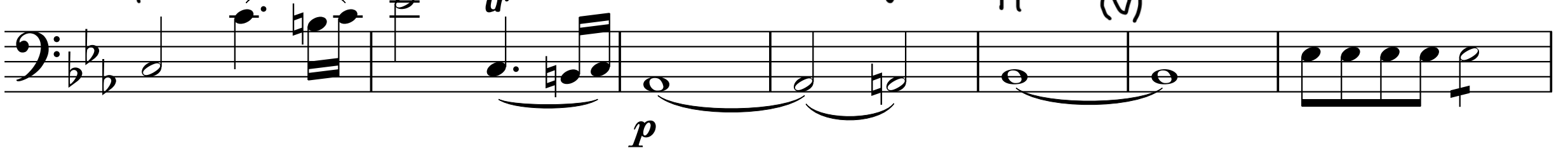
332



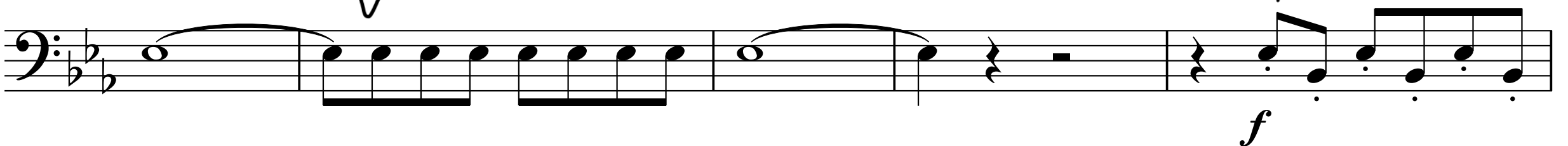
335

*f*

341

*p*

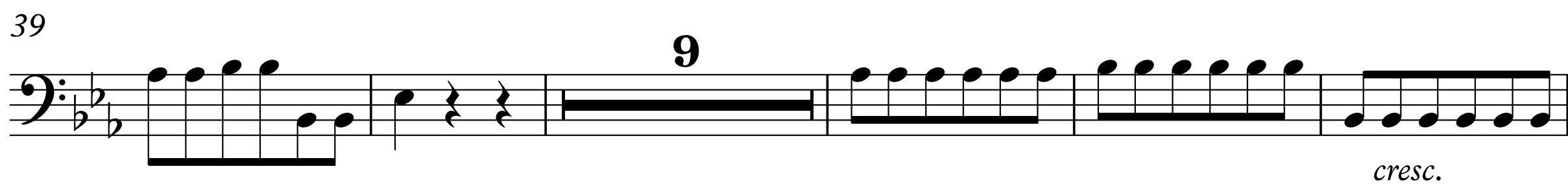
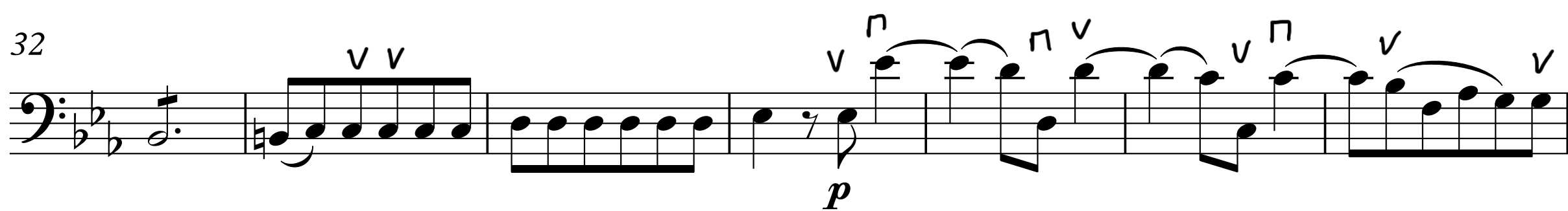
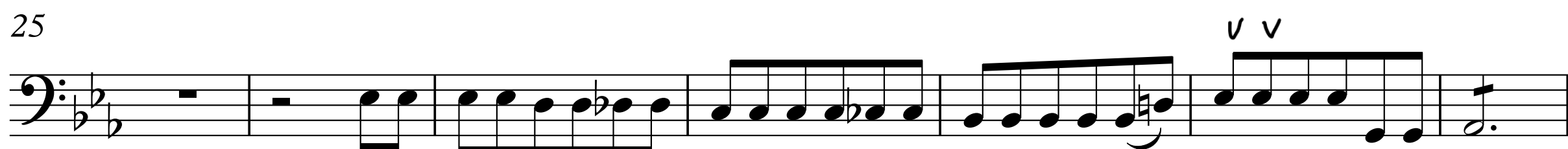
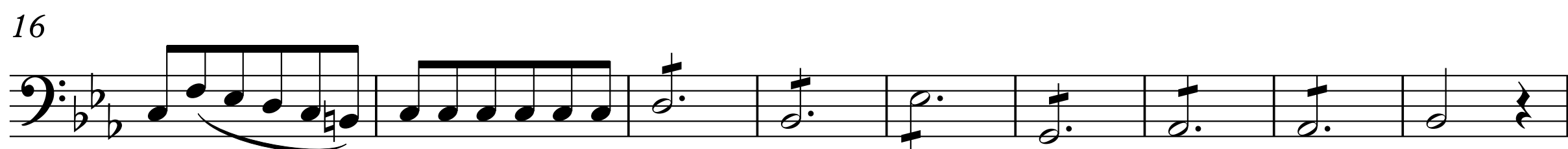
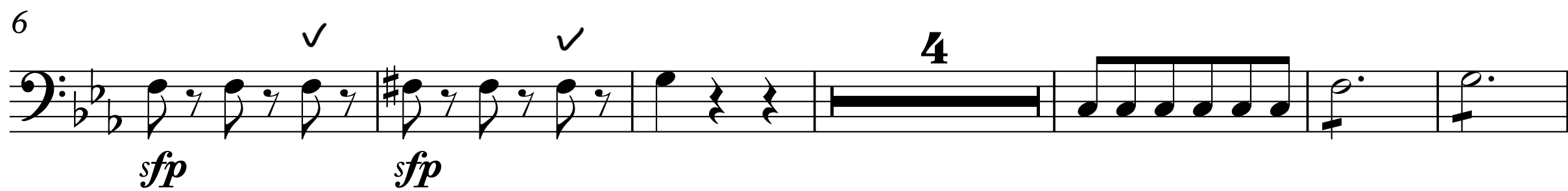
348

*f*

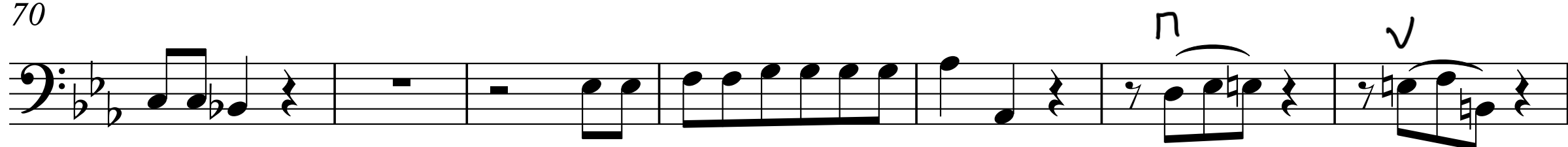
353



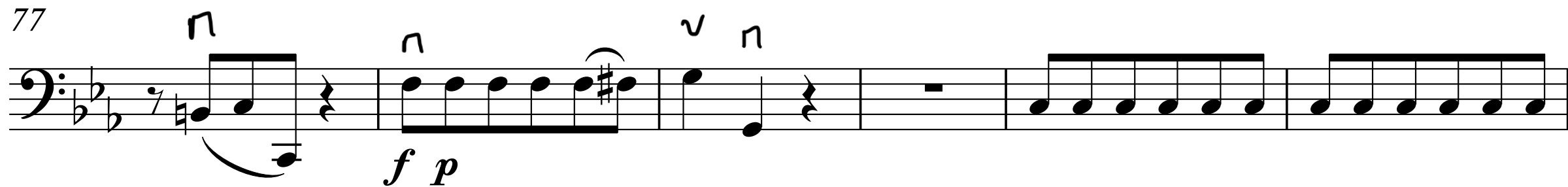
II - Andante



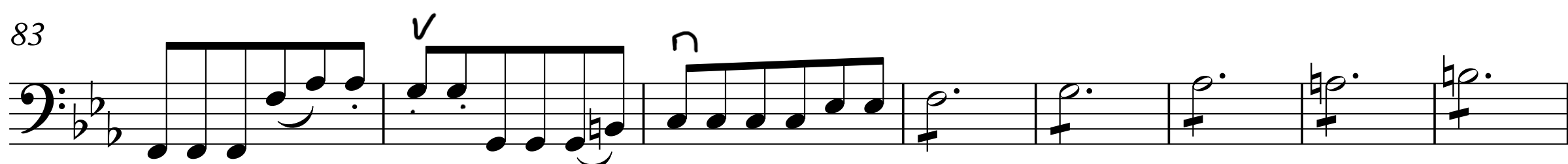
70



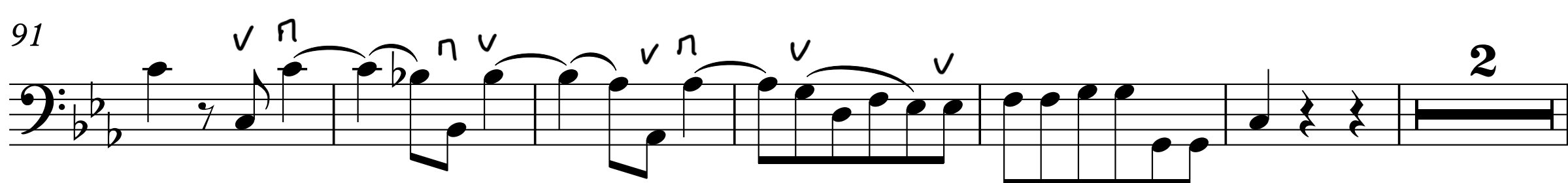
77



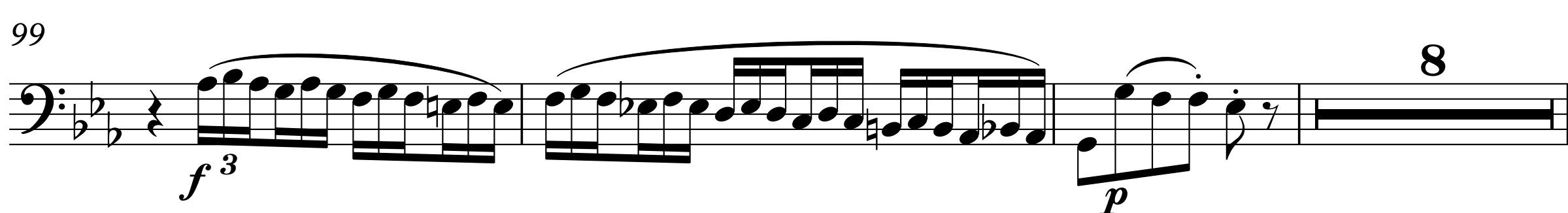
83



91



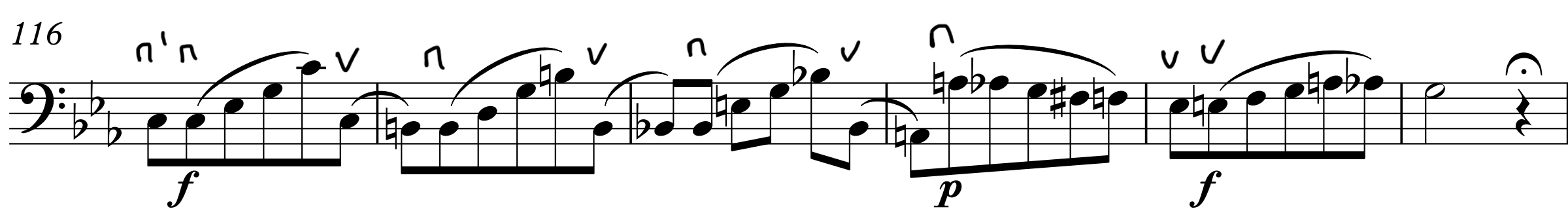
99



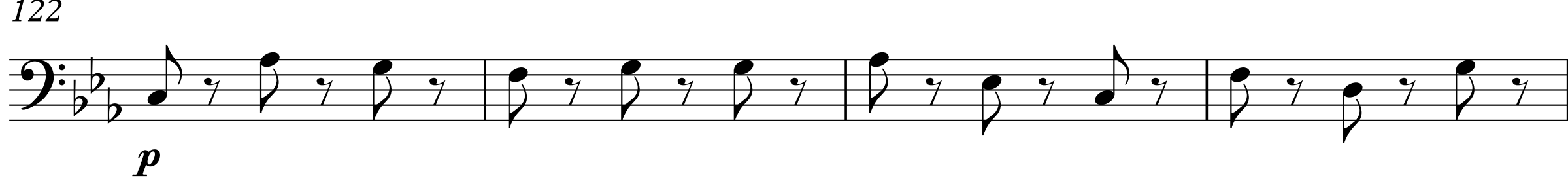
110



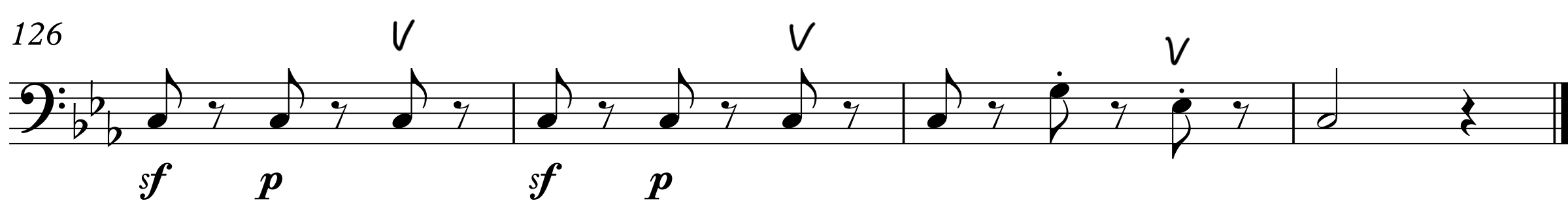
116



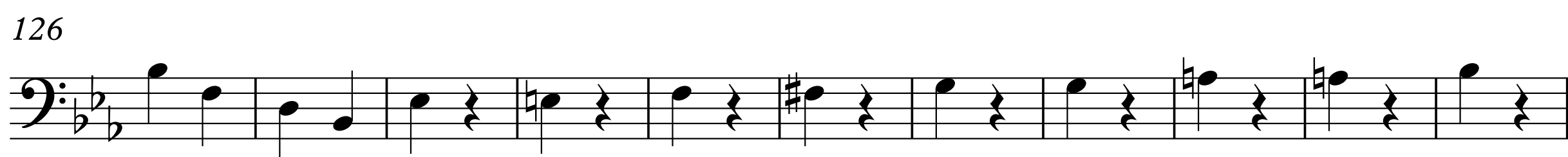
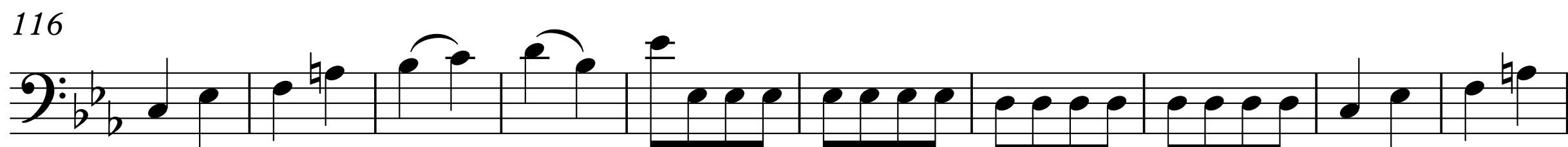
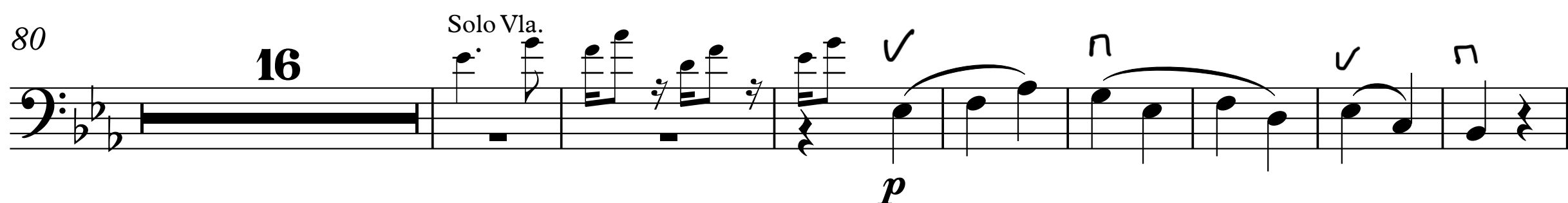
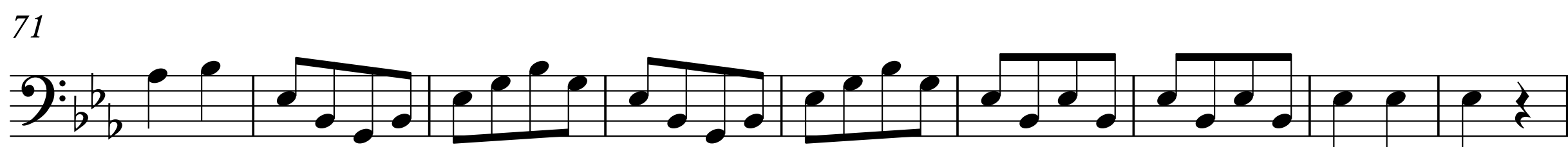
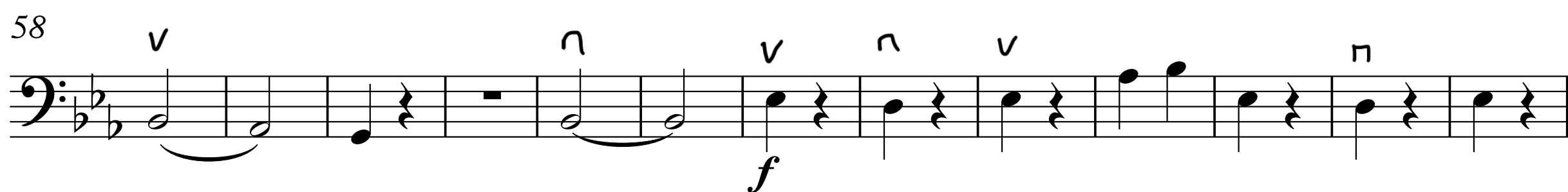
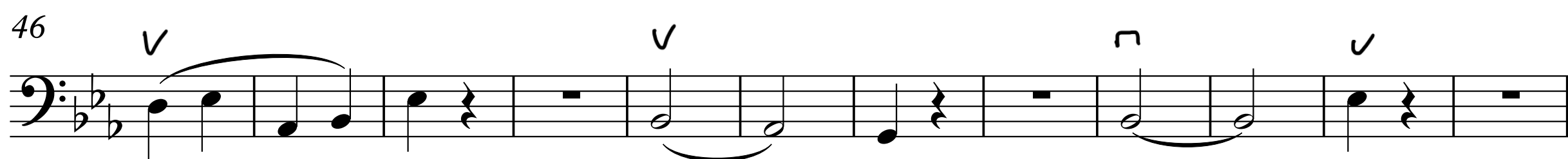
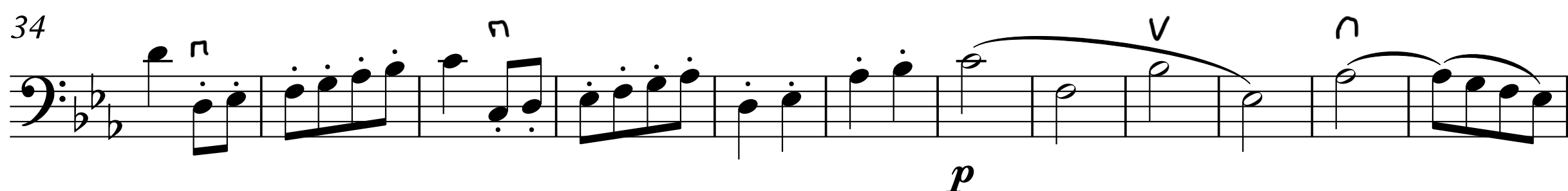
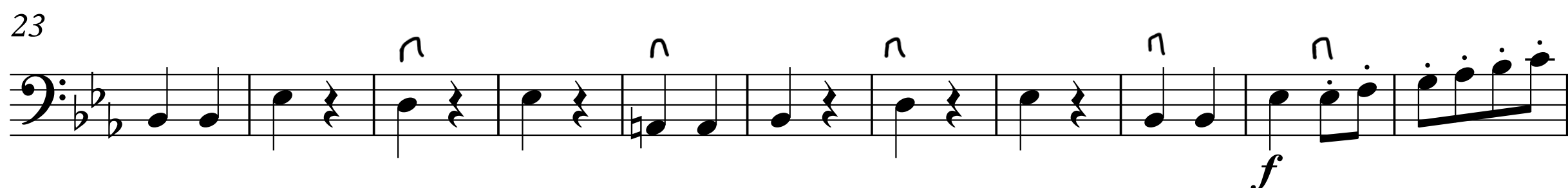
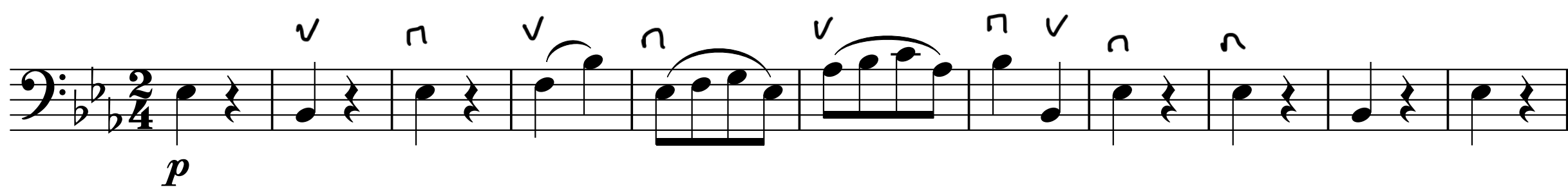
122



126



III - Presto



137

137

♭

3

149

[illegible]

175

189

The musical notation for the bass line of 'The Rose Tree' is shown on a single staff with a bass clef. The key signature is G-flat major (two flats: B-flat and E-flat), and the time signature is 3/4. The notation includes the following measures and dynamics:

- Measure 1: G2 (quarter), A2 (quarter), Bb2 (quarter).
- Measure 2: C3 (quarter), Bb2 (quarter), A2 (quarter).
- Measure 3: Rest (quarter), G2 (quarter), F2 (quarter).
- Measure 4: E2 (quarter), D2 (quarter), C3 (quarter).
- Measure 5: Bb2 (quarter), A2 (quarter), G2 (quarter).
- Measure 6: F2 (quarter), E2 (quarter), D2 (quarter).
- Measure 7: C3 (quarter), Bb2 (quarter), A2 (quarter).
- Measure 8: G2 (quarter), F2 (quarter), E2 (quarter).
- Measure 9: D2 (quarter), C3 (quarter), Bb2 (quarter).
- Measure 10: A2 (quarter), G2 (quarter), F2 (quarter).
- Measure 11: E2 (quarter), D2 (quarter), C3 (quarter).
- Measure 12: Bb2 (quarter), A2 (quarter), G2 (quarter).

Dynamics are indicated below the staff: *f* (forte) under measures 4-6, *mf* (mezzo-forte) under measures 7-9, and *p* (piano) under measures 10-12.

203

205

17

p

228

228

f

243

[illegible]

255

255 *p* *v* **14** *f*

279

The musical score for the bass line of 'The Rose Tree' is written on a single staff in bass clef. The key signature has one flat (B-flat), and the time signature is 4/4. The melody begins with a piano (*p*) dynamic. The first four measures consist of eighth-note patterns: G2-A2-Bb2-C3, G2-A2-Bb2-C3, G2-A2-Bb2-C3, and G2-A2-Bb2-C3. The fifth measure is a half note G2. The sixth measure is a half note F2. The seventh measure is a half note E2. The eighth measure is a half note D2. The ninth measure is a half note C2. The tenth measure is a half note B1. The eleventh measure is a half note A1. The twelfth measure is a half note G1. The thirteenth measure is a half note F1. The fourteenth measure is a half note E1. The fifteenth measure is a half note D1. The sixteenth measure is a half note C1. The seventeenth measure is a half note B0. The eighteenth measure is a half note A0. The nineteenth measure is a half note G0. The twentieth measure is a half note F0. The twenty-first measure is a half note E0. The twenty-second measure is a half note D0. The twenty-third measure is a half note C0. The twenty-fourth measure is a half note B0. The twenty-fifth measure is a half note A0. The twenty-sixth measure is a half note G0. The twenty-seventh measure is a half note F0. The twenty-eighth measure is a half note E0. The twenty-ninth measure is a half note D0. The thirtieth measure is a half note C0. The thirty-first measure is a half note B0. The thirty-second measure is a half note A0. The thirty-third measure is a half note G0. The thirty-fourth measure is a half note F0. The thirty-fifth measure is a half note E0. The thirty-sixth measure is a half note D0. The thirty-seventh measure is a half note C0. The thirty-eighth measure is a half note B0. The thirty-ninth measure is a half note A0. The fortieth measure is a half note G0. The forty-first measure is a half note F0. The forty-second measure is a half note E0. The forty-third measure is a half note D0. The forty-fourth measure is a half note C0. The forty-fifth measure is a half note B0. The forty-sixth measure is a half note A0. The forty-seventh measure is a half note G0. The forty-eighth measure is a half note F0. The forty-ninth measure is a half note E0. The fiftieth measure is a half note D0. The fifty-first measure is a half note C0. The fifty-second measure is a half note B0. The fifty-third measure is a half note A0. The fifty-fourth measure is a half note G0. The fifty-fifth measure is a half note F0. The fifty-sixth measure is a half note E0. The fifty-seventh measure is a half note D0. The fifty-eighth measure is a half note C0. The fifty-ninth measure is a half note B0. The sixtieth measure is a half note A0. The sixty-first measure is a half note G0. The sixty-second measure is a half note F0. The sixty-third measure is a half note E0. The sixty-fourth measure is a half note D0. The sixty-fifth measure is a half note C0. The sixty-sixth measure is a half note B0. The sixty-seventh measure is a half note A0. The sixty-eighth measure is a half note G0. The sixty-ninth measure is a half note F0. The seventieth measure is a half note E0. The seventy-first measure is a half note D0. The seventy-second measure is a half note C0. The seventy-third measure is a half note B0. The seventy-fourth measure is a half note A0. The seventy-fifth measure is a half note G0. The seventy-sixth measure is a half note F0. The seventy-seventh measure is a half note E0. The seventy-eighth measure is a half note D0. The seventy-ninth measure is a half note C0. The eightieth measure is a half note B0. The eighty-first measure is a half note A0. The eighty-second measure is a half note G0. The eighty-third measure is a half note F0. The eighty-fourth measure is a half note E0. The eighty-fifth measure is a half note D0. The eighty-sixth measure is a half note C0. The eighty-seventh measure is a half note B0. The eighty-eighth measure is a half note A0. The eighty-ninth measure is a half note G0. The ninetieth measure is a half note F0. The hundredth measure is a half note E0. The hundred and first measure is a half note D0. The hundred and second measure is a half note C0. The hundred and third measure is a half note B0. The hundred and fourth measure is a half note A0. The hundred and fifth measure is a half note G0. The hundred and sixth measure is a half note F0. The hundred and seventh measure is a half note E0. The hundred and eighth measure is a half note D0. The hundred and ninth measure is a half note C0. The hundred and tenth measure is a half note B0. The hundred and eleventh measure is a half note A0. The hundred and twelfth measure is a half note G0. The hundred and thirteenth measure is a half note F0. The hundred and fourteenth measure is a half note E0. The hundred and fifteenth measure is a half note D0. The hundred and sixteenth measure is a half note C0. The hundred and seventeenth measure is a half note B0. The hundred and eighteenth measure is a half note A0. The hundred and nineteenth measure is a half note G0. The hundred and twentieth measure is a half note F0. The hundred and twenty-first measure is a half note E0. The hundred and twenty-second measure is a half note D0. The hundred and twenty-third measure is a half note C0. The hundred and twenty-fourth measure is a half note B0. The hundred and twenty-fifth measure is a half note A0. The hundred and twenty-sixth measure is a half note G0. The hundred and twenty-seventh measure is a half note F0. The hundred and twenty-eighth measure is a half note E0. The hundred and twenty-ninth measure is a half note D0. The hundred and thirtieth measure is a half note C0. The hundred and thirty-first measure is a half note B0. The hundred and thirty-second measure is a half note A0. The hundred and thirty-third measure is a half note G0. The hundred and thirty-fourth measure is a half note F0. The hundred and thirty-fifth measure is a half note E0. The hundred and thirty-sixth measure is a half note D0. The hundred and thirty-seventh measure is a half note C0. The hundred and thirty-eighth measure is a half note B0. The hundred and thirty-ninth measure is a half note A0. The hundred and fortieth measure is a half note G0. The hundred and forty-first measure is a half note F0. The hundred and forty-second measure is a half note E0. The hundred and forty-third measure is a half note D0. The hundred and forty-fourth measure is a half note C0. The hundred and forty-fifth measure is a half note B0. The hundred and forty-sixth measure is a half note A0. The hundred and forty-seventh measure is a half note G0. The hundred and forty-eighth measure is a half note F0. The hundred and forty-ninth measure is a half note E0. The hundred and fiftieth measure is a half note D0. The hundred and fifty-first measure is a half note C0. The hundred and fifty-second measure is a half note B0. The hundred and fifty-third measure is a half note A0. The hundred and fifty-fourth measure is a half note G0. The hundred and fifty-fifth measure is a half note F0. The hundred and fifty-sixth measure is a half note E0. The hundred and fifty-seventh measure is a half note D0. The hundred and fifty-eighth measure is a half note C0. The hundred and fifty-ninth measure is a half note B0. The hundred and sixtieth measure is a half note A0. The hundred and sixty-first measure is a half note G0. The hundred and sixty-second measure is a half note F0. The hundred and sixty-third measure is a half note E0. The hundred and sixty-fourth measure is a half note D0. The hundred and sixty-fifth measure is a half note C0. The hundred and sixty-sixth measure is a half note B0. The hundred and sixty-seventh measure is a half note A0. The hundred and sixty-eighth measure is a half note G0. The hundred and sixty-ninth measure is a half note F0. The hundred and seventieth measure is a half note E0. The hundred and seventy-first measure is a half note D0. The hundred and seventy-second measure is a half note C0. The hundred and seventy-third measure is a half note B0. The hundred and seventy-fourth measure is a half note A0. The hundred and seventy-fifth measure is a half note G0. The hundred and seventy-sixth measure is a half note F0. The hundred and seventy-seventh measure is a half note E0. The hundred and seventy-eighth measure is a half note D0. The hundred and seventy-ninth measure is a half note C0. The hundred and eightieth measure is a half note B0. The hundred and eighty-first measure is a half note A0. The hundred and eighty-second measure is a half note G0. The hundred and eighty-third measure is a half note F0. The hundred and eighty-fourth measure is a half note E0. The hundred and eighty-fifth measure is a half note D0. The hundred and eighty-sixth measure is a half note C0. The hundred and eighty-seventh measure is a half note B0. The hundred and eighty-eighth measure is a half note A0. The hundred and eighty-ninth measure is a half note G0. The hundred and ninetieth measure is a half note F0. The hundred and ninety-first measure is a half note E0. The hundred and ninety-second measure is a half note D0. The hundred and ninety-third measure is a half note C0. The hundred and ninety-fourth measure is a half note B0. The hundred and ninety-fifth measure is a half note A0. The hundred and ninety-sixth measure is a half note G0. The hundred and ninety-seventh measure is a half note F0. The hundred and ninety-eighth measure is a half note E0. The hundred and ninety-ninth measure is a half note D0. The two hundredth measure is a half note C0.

288

200

✓

n

297

[illegible]

309

309

3 5

325

v

f *mf*

338

p

17

365

f

7

380

p

7

397

17

425

3

440

3

452

f

461

p

472

f

482

v *v*